

# LINE 20 EHS

ALL YOU NEED TO **CUT OUT, FINISH AND POLISH** THE SINK HOLE WITH YOUR **CNC ROUTER!**

## CORE DRILLS & FINGER BITS

- SHS Core drills: superfast continuous rim core drills (max feed rate 200 mm/min – 8 inches/min)
- Universal: different settings for different materials
- No chippings!
- A wide range of specific finger bits (for granite, quartz, marble, Dekton)
- Durable and fast!



## LINE 20 EHS

- Higher feed rate on the market (max 1.500 mm/min – 60 inches/min)
- Best finish
- Long life
- Shiny polish with Long - Life technology

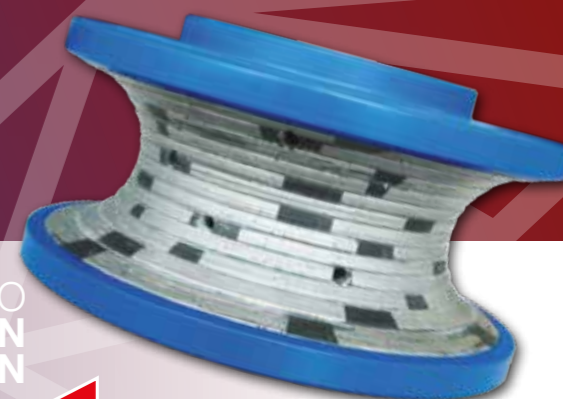


**marmoelettromeccanica**

## TWO WINNING TECHNOLOGIES IN THE SAME CNC PROFILING TOOLS SET

FEED RATE UP TO  
5.000 MM/MIN  
200 INCHES/MIN

**Razorstone**



FEED RATE UP TO  
10.000 mm/MIN  
380 INCHES/MIN



ONLY TOGETHER...  
**FASTER THAN EVER!**

**marmoelettromeccanica**

Via Flaminia km 41,400 - 00068 Rignano Flaminio (Roma)  
Tel. +39 0761 5051 - Fax +39 0761 508388  
info@marmoelettro.it - www.marmoelettro.it

**MADE IN ITALY**

**Razorstone**



**POSITION 0 / HYPER Z**  
GRANITE & QUARTZ

**5 TIMES FASTER**

than the traditional old style segmented wheels.

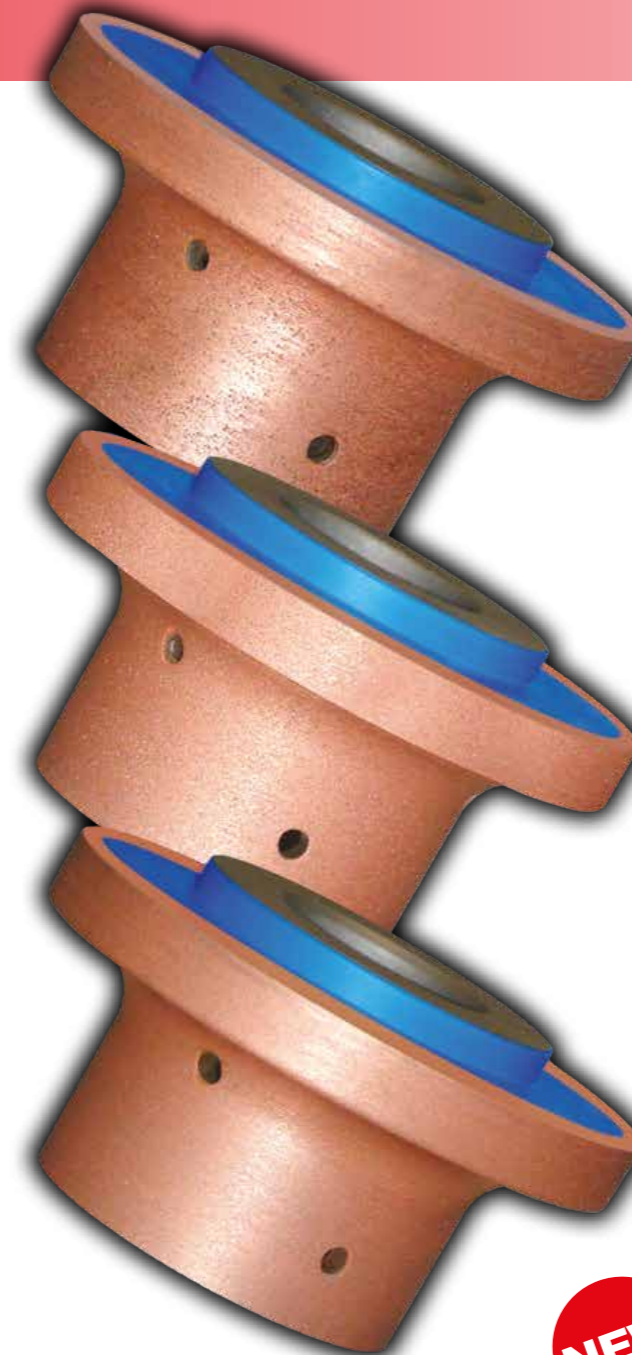
**Max feed rate 5.000 mm/min**  
(200 inches/min)

**Continuous diamond blades**  
less vibrations on the spindle

**50% COST REDUCTION**

Due to longer life span compared to segmented wheels available on the market.

IT SUBSTITUTES  
THE OLD-STYLE  
SEGMENTED WHEEL  
FOREVER!



**SPECIAL DIAMONDS**  
WITH COPPER BOND!

FULL SET OF  
**CNC PROFILING**  
**WHEELS**

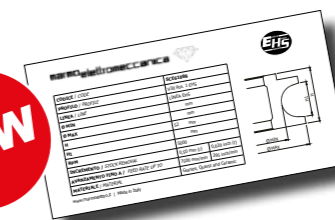
For natural and engineered materials

- Fastest tools on the market
- Perfect finish
- Higher productivity
- Easy setting
- No redressing/reshaping

**Feed rate up to 10.000 mm/min**  
(380 inches/min)

**A revolution in your Business!**

**NEW**



**X,Y,Z,T PARAMETERS SHEET**  
In order to speed up the set up almost as fast as the tools run!

AVAILABLE PROFILES

AVAILABLE PROFILES

